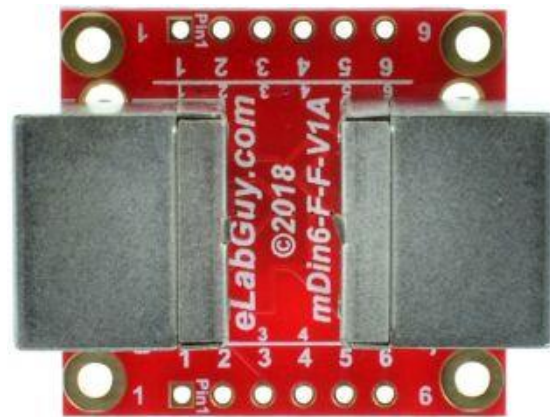


# mDIN6-F-F-V1A

## 1. Description:

mDIN6-F-F-V1A is a simple mini Din 6 (Also known as PS/2, A7000, Mouse or Keyboard connector) Female to Female pass-through adapter breakout board. It brings all 6 pins of two mini Din 6 Female connectors to screw terminal blocks and headers for easy testing, prototyping and breadboard connection. All 6 pins of a Female connector directly connect to another Female connector. User can also use the two 6 pins headers on both sides of the breakout board to connect to breadboard or prototype PCB.



## 2. Features:

- All 6 pins of two mini Din 6 Female connectors brought out to headers and screw terminal blocks
- All 6 pins of a mini Din 6 Female connector directly connect to another mini Din 6 Female connector.
- Various connecting method chosen by users.
- 4 mounting holes with 2mm diameter hole size
- 1.00"(25.4mm)X1.10"(28mm) board dimensions

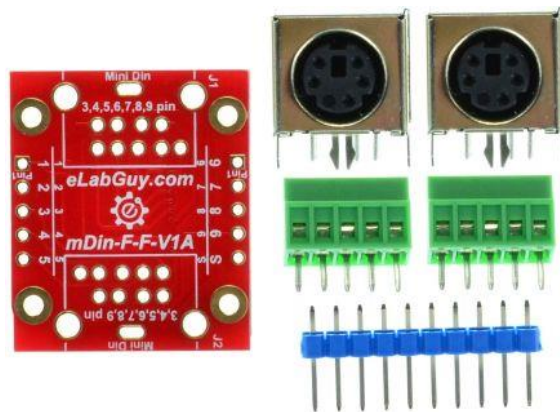


Figure 1: Parts inside the kit  
(Note: the module is not assembled, user can decide which connector to use on the module.)

## 3. Parts:

- 1) 1pc X mDIN6-F-F-V1A PCB
- 2) 2pc X mini Din 6 Female Connector
- 3) 1pc X 6pin 0.1"(2.54mm) spacing terminal block
- 4) 1pc X 12pin 0.1"(2.54mm) header

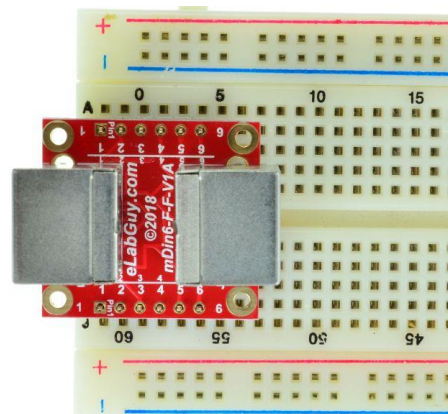


Figure 2: Example of connecting the mDIN6-F-F-V1A on a proto PCB (Note: This picture only shows the pins spacing, actual use may not be used on a breadboard)

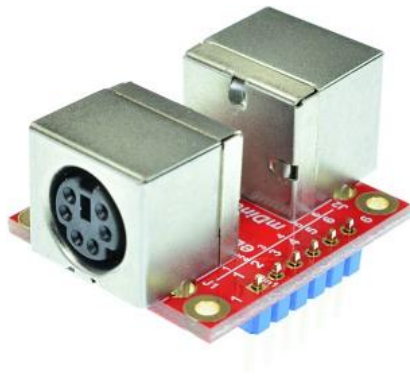


Figure 3: mDIN6-F-F-V1A with headers



Figure 4: mDIN6-F-F-V1A with terminal blocks

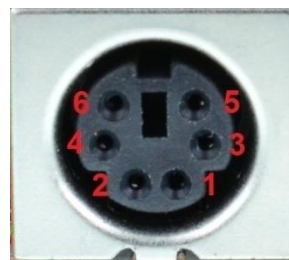


Figure 5: Mini Din 6 Female connector pinout

### Related products from eLabGuy:



mDin6-F-BO-V2A



mDin4-F-F-V1A



mDin5-F-F-V1A



mDin6-F-F-V1A



mDin7-F-F-V1A



mDin8-F-F-V1A



mDin9-F-F-V1A